

Relax, it's a Tridel.



Tridel Communities  
Across the GTA

**Aristo at Avonshire – North York**  
Tridel Store, 4679 Yonge St.  
416.730.0300

**One Old Mill – Toronto**  
Bloor & Old Mill Rd.  
Presentation Centre: 2500 Bloor St. W.  
416.645.7022 • From \$544,900\*

**Blythwood at Huntington,  
Tridel Concert – Toronto**  
Bayview and Lawrence  
1900 Bayview Ave.  
416.485.1900 • From \$800,000\*

**West Village 1&2 – Etobicoke**  
The West Mall, north of Bloor  
Presentation Centre: 6 Eva Rd.  
416.620.1887 • From \$243,000\*

**Metrogate – Ventus 1&2 – Scarborough**  
On Village Green Square across from the  
Delta Hotel at Kennedy Rd. & Hwy. 401  
416.293.5535 • From \$260,500\*

**Rêve – Toronto**  
Front St. West & Portland St.  
Presentation Centre: 28 Linden St.  
416.514.2710 • From \$334,000\*

**Republic – Toronto**  
70 Roehampton Ave., east of Yonge St.,  
north of Eglinton Ave.  
416.480.0700 • From \$555,000\*

**James Cooper Mansion – Toronto**  
Bloor & Sherbourne  
Presentation Centre: 28 Linden St.  
416.596.9888 • From \$425,000\*

**Three Hundred Front Street West – Toronto**  
Front St. West & John St.  
Presentation Centre: 28 Linden St.  
416.217.0300 • From \$323,000\*

**Avonshire – North York**  
Tridel Store, 4679 Yonge St.  
416.730.0300 • From \$313,000\*

**Avonshire Parkside Townhomes – North York**  
Tridel Store, 4679 Yonge St.  
416.730.0300 • From \$894,000\*

**Metrogate – Solaris 1&2 – Scarborough**  
On Village Green Square across from the  
Delta Hotel at Kennedy Rd. & Hwy. 401  
416.293.5535 • From \$295,500\*

**Metrogate Townhomes – Scarborough**  
On Village Green Square across from the  
Delta Hotel at Kennedy Rd. & Hwy. 401  
416.293.5535 • From \$426,900\*

**Parc Nuvo at Essex – Etobicoke**  
25 Viking Rd. West, Dundas St. & Kipling Ave.  
416.231.0999 • From \$397,750\*

**Renaissance – Richmond Hill**  
10101 Yonge St., north of Major Mackenzie Dr.  
416.736.9500 • From \$720,000\*



tridel.com

TRIDEL

home+™

TRIDEL®  
BUILT FOR LIFE

LIFESTYLE & DESIGN IDEAS FOR YOUR CONDO

Maximize  
Your Space  
50+ Real Room Solutions

Discover

- Your Personality-Driven Design
- Our Favourite Apps
- Eco Tips for Your New Home

PLUS: our designers' shopping guide

Top 10  
Finishing  
Touches  
to Add Value

Yes, You Can!  
Condo Space-Saving  
and Clutter Control Tips

second edition



## the team

For over 70 years, and after 70,000 homeowners, Tridel® has been the market leader building condominium homes.

We've built solid homes on solid values: Quality, Teamwork, Family Values, Innovation and Integrity. But of all the things we've built, your trust is valued the most.

At every stage of construction, you have a dedicated team working according to our quality control standards. Professionals from every department and discipline, who have won virtually every customer service award in the industry, listen to your requests to ensure your new condominium reflects your high standards.

Take our Interior Design and New Product Development teams who study the latest trends and specify only the finest

finishing materials. They review electrical, mechanical and floor plans for each suite together with our Construction team to maximize the design of your home. Then our Customer Care team is trained to match your vision with the best possible features and finishes for your new home.

All this so that the condominium you move into reflects and functions with your lifestyle for years to come.

### Construction Project Management

Bruno Giancola, Peter Meneguzzi, Robert Tomei

### Interior Design

Stella Salvador

### Customer Care

Danielle Feidler, Helena Lam, Chantal Sammons, Teresa Westlake

## TRIDEL HOME+™

## IS YOUR RESOURCE

## GUIDE TO CREATING

## YOUR ULTIMATE

## TRIDEL HOME.

Tridel believes that the best

decision is an informed one.

This magazine has been created

to help you prepare for your

Lifestyle & Design Appointment

and includes important

information, tools and tips for

making sure you get the most

out of your new home.



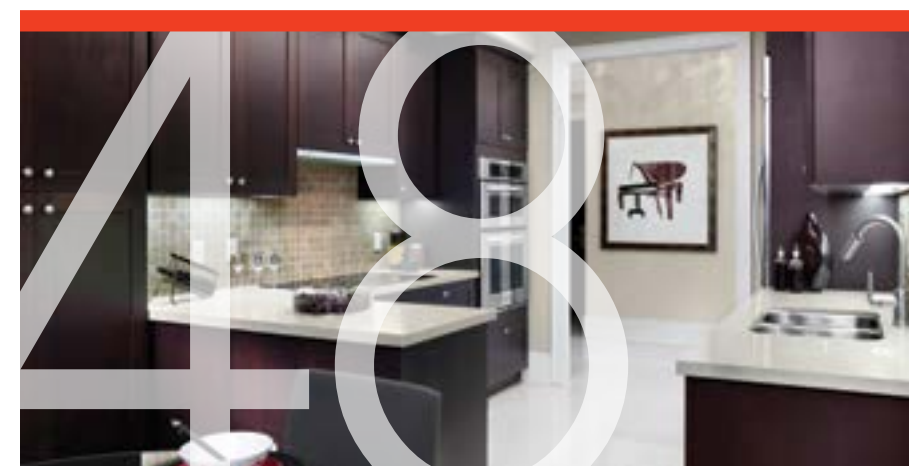
## PLAN YOUR SPACE

Maximizing every inch in your home



## DECOR ESSENTIALS

and solutions for every room



## FINISHING TOUCHES

Solutions for a polished look

## contents

- 4 : **Welcome**  
From the Editors
- 10 : **Discover, Define, Design**  
Revealing the stages of design
- 19 : **Plan Your Space**  
Maximizing every inch of space
- 22 : **Space Savers + Clutter Control**  
Products, ideas + tips
- 25 : **Fusion, Urban, Estate**  
Explore décor trends + styles
- 33 : **Happy Homeowner**  
A personal recount at Verve
- 35 : **The Green Journey**  
Living "green" tips + trends
- 39 : **Bringing Value Home**  
Personalize your home + save
- 40 : **Laying Out Your New Rooms**  
Tips + ideas: First, the kitchen
- 48 : **Finishing Touches**  
It's all in the details
- 50 : **Colour + Light**  
Add drama to your home
- 55 : **Artists Share Their Secrets**  
Selecting artwork
- 58 : **Big Design Plans**  
You may need an expert
- 60 : **Where to Shop**  
GTA's décor shopping mecca
- 68 : **Stella's Solutions**  
Borrow ideas from a pro



Publisher  
Tridel®

Editor-in-Chief  
Andrea DelZotto

Senior Editor  
Stella Salvador

Associate Editors  
Danielle Feidler  
Teresa Westlake

Editorial Assistant  
Chantal Sammons

Creative Design  
Currant Creative

Editorial Copy  
Steven Bochenek

Inquiries  
416 661 9394 • ask@tridel.com

# welcome

We are often asked, "What is good design?" We can all attest to the fact that beauty is only part of the equation (and only skin deep).

Good design starts by something fulfilling its function efficiently. At Tridel, while delivering a beautiful home, we never forget about the functionality and usability for everyday living. The right combination of form and function allow us to admire beauty in things that are also useful. There's another part to the equation though. We have to feel confident about the way something was made. To enjoy something to the fullest, we need to know that it's ethically and environmentally responsible. You can be certain that our home building process makes an important

# from the editors

contribution to the preservation of the environment. These are the basics. Ultimately, good design is what works for you. We're here to make sure you discover exactly what that is.

## Our best advice? Keep it simple.

There's a refreshing beauty in something that is simple and well made. We believe that's what Tridel homes offer. This is no small undertaking.

What may seem simple is often orchestrated, and the result of extensive and sophisticated thought. We pride ourselves on the tremendous amount of thought and energy that have gone into the creation of your new home.

Design guru Kenya Hara claims that the end result of simplicity is something that unobtrusively occupies people's daily lives and provides "reliable doses of small pleasure." That sounds just perfect to us.

We also try to keep it simple for you. Our home designs are created to meet the needs of many different lifestyles. They are, however, merely a starting point. We're delighted to offer a team of talented and creative professionals who listen... and then add their own inspired, innovative and practical ideas to help create your home, with your details.

We hope you enjoy our second edition of Tridel's Home+. It's designed to inspire

and guide you through the many possibilities for your new home. We tackle the planning, space optimization, materials and finishes selection as well as furnishings. New sections like the Shopping Guide and Bringing Value Home have been included to offer you an even better, more thorough (yet still simple) tool for creating a space that's uniquely you. We look forward to working with you and, once again, encourage you to Relax... it's Tridel.

Executive  
Customer Care  
Communications

Senior Interior  
Designer & Manager



"Nothing must be arbitrary or left to chance. Care and accuracy in the design process show respect towards the consumer."

DIETER RAMS

Tridel Home +™ Magazine is published by Tridel Corporation. Editorial inquiries may be submitted via e-mail: ask@tridel.com or by mail: c/o Tridel®, Customer Care, 4800 Dufferin Street, Suite 200, Toronto, Ontario M3H 5S9.

Notice to Readers: Tridel Home +™ Magazine makes every effort to accommodate last-minute changes. However, due to the lead times for the publication, information is subject to change without notice.

Tridel Home +™ has been created to assist you with your décor selection process and to help you establish your

design preferences. The finishes and features included in this publication are generally representative of the types of features and finishes that may be available as included and/or Personal Selections for your new Tridel® home. These selections and the suppliers who provide them may vary for each Tridel® Community.

While the majority of editorial photography is of actual Tridel® homes, please note that the accessories, furniture, lighting, wall coverings and area rugs displayed in the images are for illustration purposes only. All

suites are sold un-accessorized and unfurnished.

Tridel®, Built for Life®, Tridel Built Green Built for Life™ and Tridel Home +™ are all trademarks of Tridel Corporation. All rights reserved. No part of this magazine may be reprinted without the written consent of the publisher. Copyright 2011. The publication accepts no responsibility for the advertiser's solicitations.

Specifications subject to change without notice.

E. & O.E. 2011.



iPad is a trademark of Apple Inc. registered in the U.S. and other countries.

App Store is a service mark of Apple Inc. All rights reserved.



# IT'S YOUR HOME AND YOU DESERVE NOTHING BUT THE VERY BEST

Your house isn't truly a home until you're connected with the things - and people - that matter most. With one phone call to Rogers, you can choose a wide range of innovative services to enhance your connections with family, friends and the world around you. It's the easy and affordable way to get connected as soon as possible.

Call 1 866 558 1024 today for details.



™Trademarks of or used under license from Rogers Communications Inc. or an affiliate. © 2011 Rogers Communications



## GROUP OF COMPANIES

As a Tridel homeowner you immediately have access to the Tridel Group of Companies. Something that we like to refer to as "smart service relationships" to better serve your needs. The Tridel Group embodies a "Customer for Life" concept where our shared goal is to provide extraordinary service at every stage of your Tridel home experience. That means taking care of you well after you have moved into your new home.

As leaders of condominium living in Canada, all of the people within our Group of companies are professional, motivated and dedicated with a commitment to quality and service excellence.



Del Realty Real Estate Sales  
[delrealty.ca](http://delrealty.ca)  
[info@delrealty.ca](mailto:info@delrealty.ca)  
416.736.2617

One-step resource for the finest residential properties in the GTA, when you are looking to buy, sell or invest in property



Del Property Management  
Condominium Property Management  
[delpropertymanagement.com](http://delpropertymanagement.com)  
[info@delcondo.com](mailto:info@delcondo.com)  
416.661.3151

Professional condominium property management company for over 40 years, servicing over 37,000 homes



Del Condominium Rentals  
[delrentals.com](http://delrentals.com)  
[info@delrentals.com](mailto:info@delrentals.com)  
416.296.RENT (7368)

Toronto's foremost condominium rental management company, providing expertise for both property owners and tenants



*WE HOPE WE PASSED  
THE AUDITION*

We've been extremely fortunate to enjoy a professional relationship with Tridel for over 20 years. That roughly translates into 25,000 suites and a few million sq.ft. of installed flooring. We'd like to think that we're just warming up.

For more information, visit us online at [rosewoodflooring.com](http://rosewoodflooring.com) or call (416) 633-5757.



The Republic by Tridel | Toronto

# ACTIVE™

CLEAN AIR & ANTIBACTERIAL CERAMIC

A 250 sqf wall and/or floor in Active, properly lit, in addition to almost totally eliminating the bacteria that rest on it, including deodorizing the air, is able to substantially reduce the pollutants present, to the same extent as an average sized tree planted in the middle of the same surface.

## SAVOIA

CANADA INC.

Architectural Surfaces

*your choice for  
fine porcelain tile for floors and walls*

1-800-668-1537 | [www.savoia.com](http://www.savoia.com)



**It starts with a vision.**

The first human efforts at building date back hundreds of thousands of years. Yet even before there were pictures on cave walls or slate tablets, the images were in their creators' minds.

The ability to think visually is one of our most primitive traits. It's also the first step in creating your new home. From wall colours to tile textures, you are the artist who creates the vision.



# discover.

Involve members of your household when considering design and finishings. Share a discussion before our appointment so that we're able to make the most of our time with you.

There's a lot to "discover" before your actual appointment. How you want your home to look, feel and, most importantly, function are major decisions.

To determine the look and feel of your home, you have to start with the one BIG IDEA that every other choice is dependent on. It could be a colour, a culture, a feeling or even your favourite piece of furniture.

**Tip:** Create a **mood board** of everything that inspires you.

## Look inside

Look around your home and notice if you have multiple items of the same colour, shape or style. A great place to start is your closet.

Analyze what type of furniture appeals to you.

Study your artwork. Art is purely personal and is often a good reflection of your taste.

Describe the look and feel you want to create with words.  
(ie Simple, contemporary, cozy, casual, bright, traditional, minimal, conservative)

Reflect on your lifestyle. (ie Casual, formal)

Consider your favourite hotel. What is its style and what attracts you to it?

What is your favourite room where you currently live? Why?

## Look outside

Visit furniture showrooms, model suites, hotels and friends' homes.

Take pictures of what speaks to you.

Watch TV. Surf. Read.

## Tools



- Dream Home
- Houzz
- Mood Board Pro

Olioboard.com

## Tests

- Sproost.com
- Ethanallen.com/style\_quiz

## Inspiration

- hgtv.com
- styleathome.com
- apartmenttherapy.com




## DEFINITION

### Mood board

A collage that's an easy way to organize all of the things that inspire you and create a palette of sensations.

# define.

## 5 Top Things to Consider...



There are also logistics to consider. Share your answers to our top 5 considerations with your Customer Care Representative to create your dream home. A little bit of planning ahead goes a long way.

①

### The people who live there

Who lives in your home: Adults? Children? Pets?

Consider changes that may lie ahead: Retirement, university etc.

Consider children and/or pets and any potential related wear and tear.

②

### Your lifestyle & special requirements

What are your interests and hobbies?

Do you have specific requirements for personal collections or art pieces that may require custom display (include millwork or lighting)?

How many hours per week are spent cleaning your home? Do you prefer low maintenance finishes?

Do you have requirements for furniture pieces? Existing or new?

③

### Rooms and their uses

**Living + Dining Room** – Do you like to entertain? What would the average and/or maximum number of guests be? Think of seating and serving requirements.

**Kitchen** – Consider your cooking style and any special equipment. Do you prefer to sit at a table or island? How do you shop for groceries? Daily or weekly purchases? How tall is the primary cook? Will you require wine storage?

**Home Office + Family Room** – Think of entertainment needs (including TV and audio/visual equipment) as well as home office computer and lighting requirements. Are there additional shelving/storage requirements?

**Bedroom** – Is the bedroom used strictly for sleeping and dressing, or additional activities, such as personal hobbies, TV, reading, computer work? What direction are you facing? Are you early risers or late sleepers requiring blackout window coverings?

④

### Electrical, communications and media

**Lighting** – Consider your lighting needs. What type of lighting do you require? Do you prefer dimmers for versatility? Do you require task lighting? What level of natural light is available and will you need sun control or privacy?

**Television, Computer, Telephone** – Consider ideal locations. Are there sufficient outlets?

Do you require additional features, such as surround sound, wireless?

⑤

### Storage

Do you need to consider additional storage options? Are you more drawn to multi-purpose furniture, concealed storage or closet organizer storage? Do you require a storage locker for seasonal or large infrequently used items?

# design.

Combine your ideas and visions with our knowledge and experience. Helping you realize the home you've imagined is our greatest satisfaction.

## Your Design and Décor Appointment

From the first consultation, and throughout the design process, we include you as much as you'd like – and your time allows. And if you can't devote the amount of time you'd like? Trust us to treat your home like our own. Your design and décor appointment can be divided into 3 stages.

### ① Electrical + Mechanical

Your home's electrical plan is a key component of its design. During your appointment, we look at your electrical and mechanical plans to see if our included designs and outlets work for you. We also discuss your electrical, communication and media requirements

## Considerations

Lighting (potlights, task, accent and even fireplace electrical outlet)

Additional outlets for telephone, cable, data, fireplace, floor lighting, whirlpool and more

Appliance upgrades - water dispenser, ice maker, wine fridge, built-in coffee maker

Home office requirements

Audio/visual requirements (wall mounting of television, surround sound speakers)

We strive to accommodate all your requests but sometimes there may be limitations. What may seem like a simple change could affect the engineering of your entire building.

### ② Features + Finishes

You get a world of choices included with your new home. We select only the finest features, finishes and materials. They're based on our interior design team's professional knowledge of new trends and the past performance of our homes and, most importantly, your preferences. We discuss the lifestyle and performance benefits of each of these with you in detail. Based on your answers, we recommend what may work best for you. An example? For high-traffic areas or families with kids and pets, we often recommend porcelain tile over the beautifully unique yet more porous natural marbles and stones.

## Personality Driven Design

Stay true to yourself and your lifestyle. It's what's called "Personality Driven Design." Allow us to get to know you really well. There are countless possibilities for your home's features and finishes. We can help you find the ones that work best for you.

## Visit

**Mytridelhome.com** and enter My Home Design to view and experiment with your features and finishes selections.

## Play



Dream home APP

# design.



## Areas of Selection

- Flooring
- Countertops
- Cabinetry
- Electrical & Mechanical
- Plumbing & Accessories

## Considerations

- Maintenance Requirements
- Longevity & Performance
- Sensitivities

### 3 Personal Selections

In this highly customized world, we believe you should be able to personalize your home as much you'd like. So our in-house team of professional interior designers has created an exciting line-up of additional Personal Selections, available at an additional cost.

## Popular Personal Selections

- Extend existing included wood/laminate flooring to bedrooms
- Smooth ceilings
- Appliances – depending on community
- Kitchen countertop edge details and/or countertop colour change
- Kitchen cabinetry and accessories (e.g. pots and pans drawers) – depending on kitchen contractors
- Single sink to double sink – depending on community
- Change from framed to frameless shower doors
- Kitchen backsplash
- Enclosed open den with doors
- Closet organizers

## Popular Electrical Personal Selections

- Capped ceiling outlets – either relocate or add
- Replace phone/cable to multiport for better flexibility
- Kitchen valance lighting

## Friendly Reminders

Below are some of our basic guidelines to keep in mind throughout the process.

### TRUST YOUR INSTINCTS

Have fun, make informed decisions and enjoy creating a home that will be a personal reflection of you!

### A HELPING HAND

Remember that your Tridel Customer Care Representative is specifically trained to be knowledgeable about the range of selections offered through the décor program, however is not a professional interior designer.

### FLEXIBLE COLOUR PALETTE

When making major décor selections (flooring and cabinetry) try to select a flexible palette of colour combinations. That way decision changes down the road won't affect the most costly and built-in features of your home. Be bold with your accessories. You can change your pillows or couch far easier and much more affordably than your kitchen cabinets.

### NATURAL LIGHT

Be sure to take your features and finishes as well as Personal Selection samples into natural light to get an accurate representation of their true appearance.

### PATIENCE

Generally, we will be able to complete all of your selections in one appointment but sometimes, due to the construction schedule or your degree of interest in Personal Selections, we may require additional sessions.

"Style is what brings you comfort. It's what energizes, soothes and inspires you. Not sure what your style is? Go have a look in your closet."

Stella Salvador, Editor

\$

### Makes Cents!

One of the main advantages of incorporating upgrades into your home during construction is that payments can be rolled into your mortgage.

eco

Look for this logo at our décor office to help point out environmentally friendly selections for your features, finishes and Personal Selections.



LESS THAN 1% OF THE EARTH'S WATER  
SUPPLY CAN BE USED FOR DRINKING.

ALL THE MORE REASON TO CHOOSE  
A FAUCET WITH A CONSCIENCE.



**When it comes to using water,** we believe less is more. All Delta® bath faucets are built specifically to have a more efficient flow rate, saving up to 32%\* more water per minute. That means every time you turn one on, you'll save a little extra for Mother Nature. And just because they're water efficient, doesn't mean they aren't beautiful. Whatever your personal style, Delta has a faucet that's right for you. It's just one more idea that makes a Delta® faucet more than just a faucet.

[deltafaucet.com/green](http://deltafaucet.com/green)



\*Water Efficient Product - Flow Rate of 1.5 gpm (5.7 L/min) versus Industry Standard ASME.A112.18.1/CSA.B125.1 of 2.2 gpm (8.3 L/min)



plan



your

space

"Plan so that every  
room has more  
than one purpose;  
it's not how much  
space you have, it's  
what you do with it."

STELLA SALVADOR, EDITOR

# Plan Your Space

Quite simply, a designer's task is to create and provide the best use of space. By "best use" we mean the marrying of function with form or the aesthetic beauty of your place. According to the Editor of Home+, Stella Salvador, "One difference between average and outstanding design is to plan with flexibility, so that every room has more than one purpose; it's not how much space you have, it's what you do with it".

## Floor lamps

take up less space than side tables with lamps

Surround sound speakers for AV or stereo entertainment.

Extending furniture upward toward the ceiling adds visual interest

Multi-functional stools are used for serving or additional seating

Chairs on castors are great for maximizing seating versatility

Built-in multi-purpose table with incorporated wine rack

## 5 Top Things to Consider...

①

### Space and traffic flow

Allow sufficient space around furniture arrangements (ie: 24" or more between a coffee table and the edge of a sofa).

②

### Evaluate your lifestyle

Take the time to identify critical goals for your interiors.

③

### (Multi) Functions of each room

How will each room be used? Incorporate the furniture to make it happen. A cleverly designed banquette is not just for lounging, but can also be used as a dinette area.

④

### Clutter shrinks room

Consider Tridel Personal Selections like closet organizers or extra storage. Inquire about the availability of lockers located in your community to store infrequently used or seasonal items.

⑤

### Furniture and lighting

When planning your electrical layout, carefully consider the placement of furniture, audio/visual equipment (wall mounted TV, etc.) and task lighting (do you read in bed at night?). This will ensure you wire your space appropriately.

Decide on your changes early because once concrete is poured, what may have been a simple change could be costly or even impossible.

tech tip



### MARK ON CALL™ (M.O.C.)

Make sure the sofa you had your eye on will actually fit in the elevator and through the door (and lay out your furnishings beforehand).

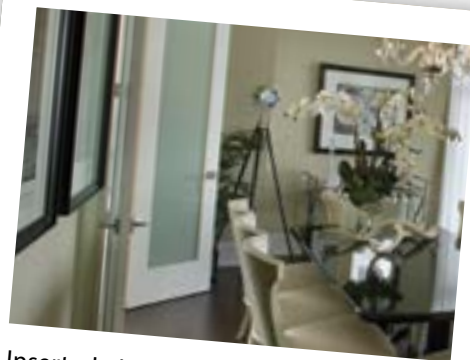
M.O.C. can help you to plan, preview and complete your home's décor.



tip

#### LOOK UP

It's estimated that 50% of the storage area in our homes is wasted and that we tend to only decorate and furnish up to 6 feet high. Hidden vertical space is the most underused area of most rooms.

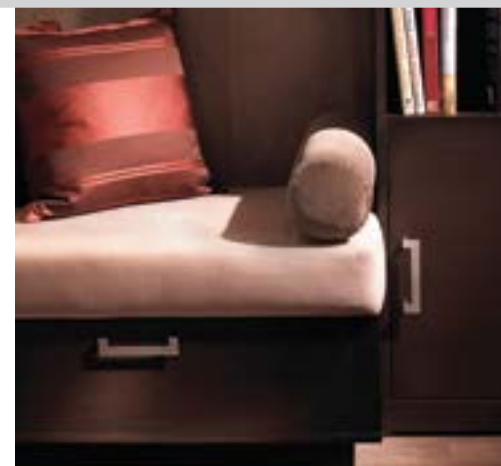


Inserted glass adds a clean look and is aesthetically light, adding visual space and unobstructed views.



#### Custom Millwork

Custom millwork allows flexible design at the planning stage. It promotes easy storage solutions which never look like an after-thought but a well incorporated aspect of your décor. You gain optimum use of your living space, because it's designed for this particular area's size, shape and function.



#### Home Office

It's estimated that the SOHO (Small Office Home Office) population in Canada increased 33% over the past decade. There are increasing options to setting up equipment and files in an orderly, beautiful and functional way. Don't necessarily need that walk in closet or den? Multi-function furniture, concealed storage options and integrated IT can make the change a simple one.

## Space Savers + Clutter Control

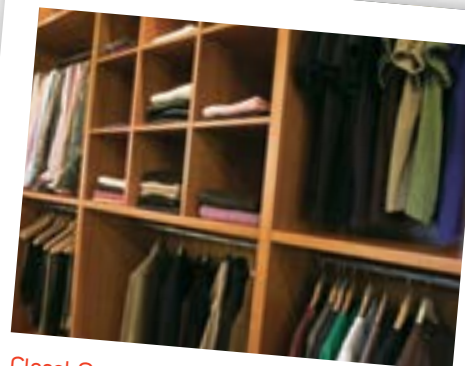
The trend of urban living is often accompanied with the challenge of maximizing your space. Each design decision is an important one. The key to a successful space is truly in its planning. With inside tips and a little creativity you can absolutely live large – regardless of your square footage.



A shallow, mantle-free fireplace is an economical, convenient and space efficient way to add warmth and beauty.

### Make the most of your space

- *Keep it clean.*
- *Be organized.* A place for everything and everything in its place.
- *Remove clutter.*
- *Edit.* Look at everything with a critical eye. Evaluate what you use daily.
- *Make thoughtful purchases.*
- *Realistic design.* Don't design for the exception (when guests visit), design for the everyday.
- *Multi-purpose everything.*
- *Lift it up.* Legs on furniture, floating bookshelves, wall mounted pieces, hooks.
- *Expand.* Clear furniture and reflective surfaces create space.
- TEUX DEUX Paperless to-do list



#### Closet Organizer

These help even the most disorganized. Save space in your closet and time in your searches.

tip

There's a misconception that small things in smaller spaces enlarge it. Larger, but fewer things actually enlarge a space. They should be combined with smaller compact pieces.

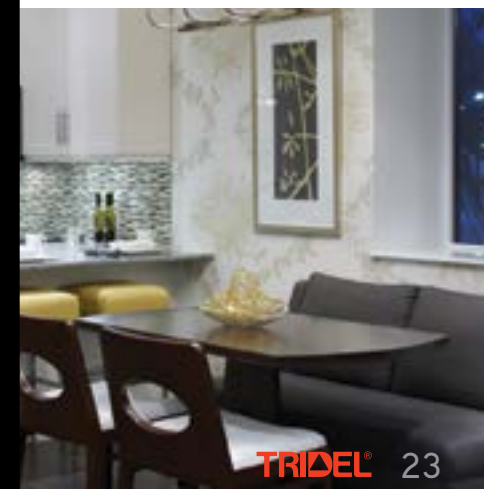
#### Dining Space

Beyond their utilitarian role, kitchens have become a popular venue for leisure, work and entertaining. Ease this integration with an environment that's lifestyle inclusive. Note how a lowered dining table off of an island (above) and banquette seating (below) help the kitchen serve its many functions.



#### Flex Furniture

A comfortable space needs to be functional and efficient. Furnishings selected with a little creativity and imagination can utterly transform your living quarters. Ideal for a condo, this modern and sustainably made Emerson Sofa from Casalife is multi-purpose (with optional fold-out bed) and totally configurable.



tip

#### GET UP OFF THE GROUND

Legs lift furniture off the ground. Negative space (a.k.a. air) gives the optical illusion of spaciousness.





# FURNITURE that FITS

SAVE **25%** when you bring  
in this ad.

Not to be combined with any other offer or promotion. Regular priced items only. Not to be used with Tridel gift certificates. Not subject to prior sale. Available to Tridel purchasers only. This ad must be presented to Decorium at time of sale. All sales final. Offer ends 12/31/2011.

Room Planning • Small Space Solutions • Complimentary Design Service • Worldwide Delivery

Just what you're looking for in a furniture store.®

416 736 6120 • 1 800 232 2267  
363 Supertest Rd. Toronto, ON M3J 2M4  
Join us on: [www.facebook.com/decorium](https://www.facebook.com/decorium)

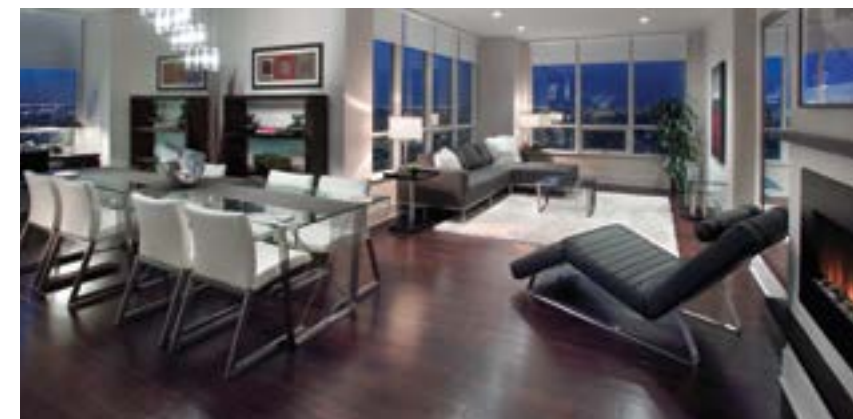


[www.decorium.com](http://www.decorium.com)  
Tridel® and Tridel Built Green. Built for Life® are regis-  
tered trademarks of Tridel and are used under license.  
©Tridel 2011. All rights reserved. E.&O.E. March 2011.



## Fusion

Some people follow design “principles” and create a room according to a clearly defined style. The challenge? The rules are changing. Styles are more or less blending together, creating a more eclectic look. There are no *commandments of style* that you should be afraid to break. We encourage you to create a style that is uniquely yours and use design principles merely as a guide. Enjoy the freedom to infuse your space with your own personality and create something beautiful. Maybe you’re not sure what your style is yet. Start by reviewing the following three prominent styles, featuring many highlights and ideas.



## Urban



## Estate

# Fusion

**Frosted glass doors**  
separate the kitchen and  
allow light to pass through

**Sheer white drapery**  
frame large windows  
gracefully

**Tuxedo style sofa**  
with seamless single  
cushion

**Armless chairs**  
with contrasting fabrics  
save space

**Post-Modern chair**  
Mix of wood and neutral  
fabrics within strong frame  
(with cutouts for visibility)

## Classic comfort.

Fusion borrows from several different styles and evokes the imagination. It bridges and blurs the lines of the styles as classic sensibilities and modern elements are married, yet remain flexible.

### DESIGN ESSENTIALS

Note how the diverse and individual elements in this room subtly work together to unify it.

**Simplify** – A carefully selected palette that is eclectic yet cohesive creates a serene environment.

**Diverse Fabrics** – Fabrics may include solids, patterned (typically tone on tone) and striped to compensate for lighter colours and to add interest.

**Furniture** – Traditional furniture pieces, often updated with clean lines, colours and finishes, offer a sense of nostalgia. Notable are clean designs that are comfortable and functional.

**Freedom** – The ability to mix finishes and periods (such as light and dark wood stains, paint, mirror, metal, and leather).

**Window Coverings** – Modest treatments are typically solid colours either in drapery or blinds.

## Fusion Finishes

“Classic, timeless and sometimes unexpected... appealing to all your styles senses. There are no rules here.”

Stella Salvador, Editor

Surf/blog ► [designsponge.com](http://designsponge.com)

Follow ► [twitter.com/AptTherapy](https://twitter.com/AptTherapy)

Shop ► [Decorium](http://Decorium)



Painted Cabinetry Doors

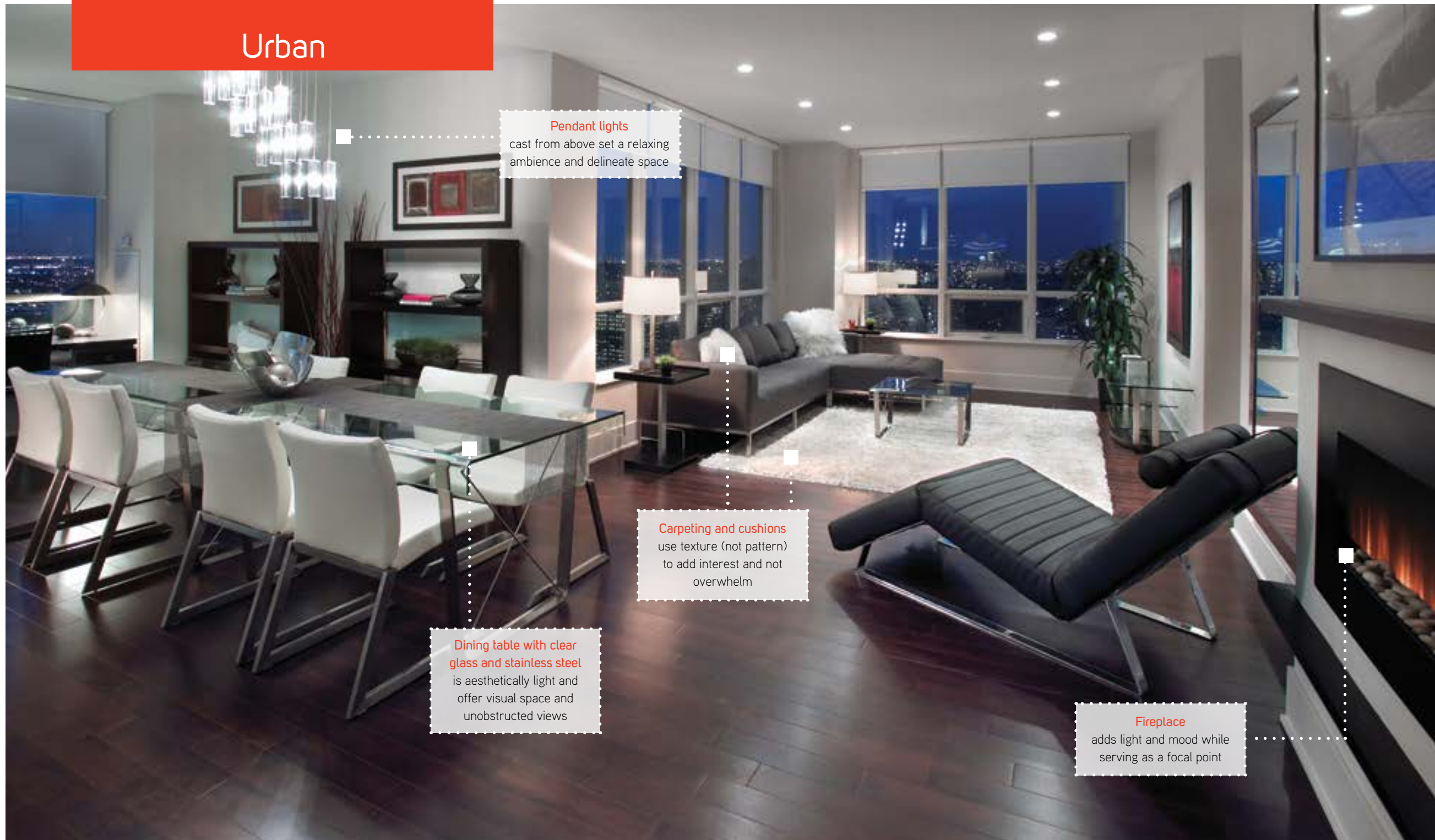


Textured Mosaic Backsplash



Light Marble

# Urban



**Pendant lights**  
cast from above set a relaxing  
ambience and delineate space

**Carpeting and cushions**  
use texture (not pattern)  
to add interest and not  
overwhelm

**Dining table with clear  
glass and stainless steel**  
is aesthetically light and  
offer visual space and  
unobstructed views

**Fireplace**  
adds light and mood while  
serving as a focal point

## Simple sophistication.

With understated simplicity, a contemporary home can easily be a comfortable and welcoming retreat from the buzz of city life. Note how this room creates an atmosphere of subtle sophistication with the absence of decoration and clutter, and the presence of polished surfaces, clean lines and sleek furniture. An urban oasis.

### DESIGN ESSENTIALS

**Muted Colours** – Keeping colours muted allows featured pieces to stand out. Colours may be monochromatic or include dramatic accent colours.

**Accessories** – They are well thought out and minimal with a “Less is More” approach and a notable absence of clutter.

**Texture** – Space is enlivened by creating visual interest and movement.

**Furniture and Fabrics** – Streamlined simple furniture with smooth clean lines and geometric shapes.

**Natural Materials** – Bringing the outdoor in through materials such as wood, glass, stone, leather and steel inject subtle colour into the larger scheme.

**Flooring** – Typically it’s smooth with wood or tile. Carpeting is often tone on tone or textured such as berbers and sisals.

Surf ► [hivemodern.com](http://hivemodern.com)

Read ► [Dwell magazine](#)

Shop ► [Design Within Reach](#)

## Urban Finishes

“Characterized by solid colours and texture of the materials that create visual drama. Interiors showcase space rather than ‘things.’”

Stella Salvador, Editor



Quartz Countertop



Grey-toned Wood Flooring



Flat Panel Cabinetry Door

# Estate

Screen  
as a backdrop to furniture

Cornice Moulding  
painted in the same  
colour will heighten  
a ceiling

Granite slab backsplash  
with no grout lines offers  
easy maintenance

Accent with bold colour  
through accessories,  
cushions and art

## Formal design... reinvented.

As seen here, this style can be formal, characterized with symmetry and order, but is also confident and thoughtful with uncompromising comfort. Dark flooring sets the tone and vintage furnishings can highlight a space. Complete the room with luxurious fabrics, either solid or patterned in damask or stripes.

### DESIGN ESSENTIALS

**Fabrics** – They are rich in texture (silk, linens etc.) in elegant colours and traditional patterns.

**Architectural Accents** – Details such as cornice moulding, wainscoting and high baseboards add visual details.

**Finishings** – Along the more luxurious spectrum, including granite and marble.

**Window Coverings** – Treatments are fuller with simple, long panels.

**Furniture** – Pieces are formal yet comfortable. They are timeless and may include ornate detailing.

**Collectables** – Personalized items are often displayed in showcase pieces.

Join ► [houseandhome.com/enewsletter](http://houseandhome.com/enewsletter)

Read ► Traditional Home magazine

Shop ► Elte Carpet and Home

## Estate Finishes

"With effortless elegance this is a renaissance of style. No longer simply traditional but classic with finesse."

Stella Salvador, Editor



Raised Panel Cabinetry



Earth-Toned Granite



Natural Stone Backsplash



**TRIDEL**  
BUILT FOR LIFE

# Breathe, it's a Tridel.

As Canada's leading condominium developer, Tridel is committed to building communities that are environmentally responsible, energy efficient and naturally healthy places to live.



## Happy Homeowner

Murray Newman, Verve Loft & Condos



Murray's home office/guest bedroom features custom millwork and lighting.

"July 3, 2008!" Murray Newman recalls the very day he moved into his "penthouse on the third floor" of Tridel's Verve condominium. His answer is immediate, like we'd asked his birthday. And no wonder. Murray's condo is beautiful.

A breath later, he adds that he was also the very first homeowner to move in to this community. Yes, community. He believes he couldn't ask for better neighbours, staff, property management or concierge, all of whom he's on a first name basis with.

### Exterior and Natural Features

Murray attributes much of the beauty of his home to natural light and an 800-square foot-terrace. Opening a terrace door, he shows us how quiet it is – surprising here in the heart of the city.

He shows off the view, especially the Nurses Residence of the Old Wellesley

Hospital. Its bas-relief, an architectural technique where carved figures in a flat surface project slightly, was the first thing he noticed when he moved in, and a detail he still treasures.

Next, Murray demonstrates a bonus, courtesy of his additional exterior doors: a cross breeze – something most of us don't expect in a condominium. Murray loves it, preferring such a natural element in his home over the drone of air conditioning.

The other natural element he loves is the suite's southwest exposure. His home receives such beautiful lighting. Plus, he says he rarely turns on the heat during colder months, because it's virtually "solar heating" via direct sunlight.

Mr. Newman's view from the third floor was intentionally chosen. Three stories up he's still somewhat "anchored" to the earth with an inviting stair climb.

### Inside Choices

What makes Murray's home truly beautiful is the attention to detail. It began long before he moved in. Murray comes from a "builder family" and had no trouble visualizing what he wanted to create in the physical structure of his home. He relishes design challenges, preferring to call them opportunities. "If your space isn't designed well, you'll tire of it."

For instance, he decided to forego a second sink in the kitchen island, opting instead for an overhang on all 3 sides. So it easily seats eight people and serves as a workspace for Murray's many art projects, which require vast countertop space. It doubles as an activity centre when his nieces and nephews come to visit. (For more formal occasions, there's a collapsible dining table and 12 chairs in storage. He sets up a bar on one end at one end of the island and buffet on the other.)



Murray admits that the money spent on upgrades could have gone towards furnishings but, “beautiful furniture will only hold you for so long.”

Murray defines his style as “minimal and traditional.” He shed all nonessentials before moving. Professing little attachment to “things”, Murray questions how we define ourselves by our belongings. In alignment with this philosophy, his home presents a bright, uncluttered beautiful space. “Unless I absolutely love something, it’s not coming in.”

#### Murray’s Advice

- *Before adding finishing touches, take some time to settle in* and get used to the space. Some of Murray’s revisions included custom cabinetry and additional lighting. One of his first was window coverings, but you have to look closely to see them. They’re neatly concealed at the peak of the window frames.
- *Take your time with the design.* Murray considers his home a work in progress.

For instance, he still has plans to mirror the corridor, extend hardwood into the master bedroom, custom paint and build a custom sofa.

- *Have electrical plans reviewed by a third party*, whether it’s someone with a keen eye or even a designer. Although Murray pays close attention to details, there was one in particular that he missed. He will revisit a dual switch for lighting at the front door.
- *Don’t be intimidated to make design revisions*, as long as they’re communicated clearly and well coordinated.

#### Proud and Happy Homeowner

Asked what his proudest do-it-yourself moment was, Murray laughed and admitted that he doesn’t believe in do it yourself. “In all seriousness, why compromise the safety of the building, your warranty and your insurance?”

Murray was pleased with the quality of Tridel’s work and service. “While the changes were many, the team at Tridel

made it easy and my experience was nothing short of excellent.” When issues inevitably arose, he always felt that he was heard clearly and responded to promptly. From the beginning, “Tridel’s goal was to deliver a product that I was 100% satisfied with.”

And satisfied, Murray certainly is. As well as proud. Proud of the Verve community, proud to live in one of the first certified LEED® Gold condominiums in Toronto. Proud of his penthouse on the third floor. As Murray himself asks, “Where else would you find an 800-square-foot terrace and three bathrooms other than a penthouse suite?”

**Happy Homeowners** is an opportunity to invite Tridel into your home, share your experience, insight and important lessons learned. Join the conversation at [tridel.com/happyhomeowners](http://tridel.com/happyhomeowners).

# The Green Journey

Change the world one step at a time

This section talks about those sustainable, smart decisions that consider the beauty, function and health of your new home. Decision-making entails the duty of educating ourselves, which takes time, energy and sometimes even money. It’s a journey. Each day at Tridel, we make the best decisions we can to deliver you a home that is healthy, functional and beautiful. It’s a balance. We do our best to minimize our carbon footprint while satisfying our customers’ desires.

The choices can be overwhelming. So we’re patient with ourselves and encourage you to do the same. Don’t succumb to “green guilt.” If you do poorly one particular day, you can do better the next. Remember, green living doesn’t mean having to completely change everything about your lifestyle. Just start out with one simple step.

By choosing Tridel, you already have. You’re living in a condominium with technological innovations. Innovation is change, and change often means different, but it doesn’t mean inferior. That new sulfate-free shampoo may not produce the suds you’re used to, but your hair’s just as clean. You can’t smell (and may even miss) the scent of your new bathroom cleaner but your tub is still sparkling. Our in-suite state-of-the-art continuous exhaust may not de-fog your mirror with the flick of a switch, taking a few extra minutes than you’re used to... but we think you’re worth it.

As part of the journey, you uncover myths – such as, clean doesn’t mean harsh chemicals. You unlearn old habits, like leaving the toaster plugged in and bidding farewell to “phantom energy”. You adopt healthier options for yourself and the planet.

**What Tridel promises is healthy change without compromising quality.**  
**Visit [tridelbuiltgreen.com](http://tridelbuiltgreen.com) to learn about the green steps we’ve taken.**

“A journey of a thousand miles begins with a single step.”

Lao-tzu



#### GREEN GUILT (a.k.a. Eco-guilt)

It arises when you feel you haven’t done enough to save the planet. The guilt evolves from the innate connection we have to the natural world. Instead of feeling remorse, why not shift your focus and recognize the positive things you are doing to help? Like choosing a Tridel condominium.

#### PHANTOM ENERGY (P.E.)

The energy and money that are wasted when electrical objects are unnecessarily left plugged in. Devices that require resetting after a blackout or power surge, or that have an “instant on” feature, often indicate a phantom load. P.E. sends tons of carbon dioxide into the atmosphere.

Brands we Love

Nature Clean  
(our top Canadian choice!)



Mrs. Meyers

Ecover

Seventh Generation

Favourite  
Donation Spots

Furniturebank.org  
Habitat for Humanity Restore  
Reddoorshelter.ca

Logos to look for



Breath Easy.

Counter-intuitively, the air inside our homes is estimated to be two to five times worse than the air outside. More shocking, most people take approximately 20,000 breaths a day and most of them (90%) are indoors.

While we do our part to deliver a home that is “clean,” outside elements also contribute. According to the World Health Organization, these are the top toxins we willingly bring inside:

- *Antibacterial ANYTHING:* Triclosan, the active ingredient is toxic. Regular soap kills 99.4% of germs, antibacterial soap kills 99.6%.
- *Air fresheners:* These work by coating your nasal passages or releasing nerve-deadening agents, often with formaldehyde or phenol. Instead, open the window or turn on the fan.
- *Dishwasher Detergents:* Most contain concentrated chlorine which will transfer to your dishes and, therefore, to your food. Buy phosphate- and chlorine-free alternatives.
- *Oven Cleaners:* Most brands contain carcinogens (such as sodium hydroxide).
- *Carpet and Upholstery Shampoo:* Perchlorethylene is a known carcinogen and an active ingredient. Try natural options in your pantry: salt for wine and fruit stains; club soda for light stains; baking soda and water paste.
- *Toilet Bowl and Tub cleansers:* They’re a source of many poisonings. A safer option is white vinegar diluted with water. In small, usually windowless areas such as these, keep your air clean.

New Home Smell. Trust Your Senses.

What exactly is that “new house smell”? It’s toxins, and we’re proud to share that our homes don’t have it, thanks to our smart selection of low or zero volatile organic compounds (VOC) finishes.

Paints, carpets, flooring and adhesives can all contribute to the release of VOC in the air resulting from off-gassing (a.k.a. “evaporating”) as particles break off. They then find their way into the air you breathe, and then into your lungs.

It’s important to know how to identify low-emitting products to preserve your environment. Here are some green furnishings facts we wanted to share. Big or small, there’s often a greener option.

**Sofas** now incorporate soy foam fill (not 100% green yet a more environmentally friendly option), in replacement of polyurethane foam. Toluene diisocyanate, a key ingredient in polyurethane is a chemical that contributes to indoor air pollution and possible carcinogen. A sofa is something you lay down and relax on, right?

**Vinyl Shower Curtains** release over 100 toxic chemicals into the air. They contain polyvinyl chloride and phthalates (DEHP) already banned in children’s toys in European Union and some states, specifically California and Washington. Look for cotton alternatives.

**Carpets** are made with chemicals like flame retardants, glues and dyes which off-gas. Look for green label approved carpets.

**Window Coverings** are usually selected on price and style, not safety. Look for alternatives to polyvinyl chloride (also called PVC or vinyl) blinds. Materials derived from nature won’t impact your indoor air quality. Adding window coverings can regulate temperature and reduce energy usage (not to mention protect furnishings and finishes from sun damage).

How to Read a Label.

Not all green is good, and there’s a lot of “greenwashing,” so learn what to look for in your products. In Canada, ingredients are listed in order of quantity, with the first ingredient making up the greatest amount of the product. Not all products however (such as cleaning products) require ingredients to be listed, which can make for a little more effort on your part.

Remember that just because something is derived from a plant, fruit, tree or vitamin, does NOT mean that it’s healthy. Often, ingredients undergo many chemical processes that result in an ingredient with minimal resemblance to its original source.


Also notice that many products tell you only what they do NOT contain. Our suggestion is to look for honest companies that make their ingredients known. Odds are, those are the ones that are healthy and wise.

Ask the Right Questions... in Search of Green.

Whether you’re looking for carpet, curtains or furniture, finding guilt-free furnishings involves asking the right questions. Remember the top three criteria you want to consider. Even meeting just one of them is a step in the right direction.

- ① Is the product healthy for your home?
- ② Is it environmentally friendly?
- ③ Is there third-party certification to attest to its social responsibility? Remember, our choices not only affect our homes and our families, but people and communities across the globe.

Don’t be afraid to ask where materials come from. How was it created, assembled and finished?



**EARTH911.com**  
Not sure what to do with some items that aren’t for the blue bin? Hangers? Computers? Paint cans?

**Toronto.ca/garbage**  
Ask the waste wizard where things go. (Did you know a greasy pizza box goes in the green bin?)

Greenwashing

The 10th edition of the Concise Oxford English Dictionary defined greenwash as “disinformation disseminated by an organization so as to present an environmentally responsible public image.”

Green Tools



Houseplant 411

Get help selecting plants for your home along with “care reminders” to help them thrive. Join an online community of “foliage fans.”

Shop

Artefacts Salvage & Design  
www.artefacts.ca

Urban Tree Salvage  
www.urbantreesalvage.com

Roomy Interiors  
www.roomyinteriors.com

Surf

Environmentaldefence.ca  
cosmeticsdatabase.com  
Storyofstuff.com  
Greendesignhub.com





# Loved by nature.

"It feels good knowing my floor, this wonderful cork, comes from a renewable resource."

Created from cork bark that fully re-grows, TORLYS Cork flooring is uniquely friendly to the environment. Spectacular to behold, warm to the touch and naturally air-cushioned for quiet and comfort, TORLYS Cork is also gifted with long-life, even as it harmonizes, every day, with nature. It's new thinking, and it's offered to Tridel customers. Visit [torlys.com](http://torlys.com).

**TORLYS**  
CORK FLOORS

## The Real Value of Personalizing Your New Home



### 7 Ways Tridel Personal Selections Give You Great Value

- ① Cost**
  - Tridel provides you with a complete cost before we begin.
  - There are no hidden fees such as delivery charges, labour and installation fees or service taxes, after the fact.
- ② Time**
  - Save time. Our qualified trades and tested products save "research" time on your end. Synchronization of your calendar and our own allows for easy scheduling of appointments.
  - Pre-planning of finishes and features with us at the planning stage, allows you to enjoy your home from day one.
- ③ Quality**
  - Included and Personal Selections have been researched and vetted by a team of professionals, meeting extremely high standards of performance.
- ④ Professional Installation**
  - Your selections are installed by licensed trade professionals who perform to our high standards and have extensive condominium experience.
- ⑤ Value and Investment**
  - Investing \$2000 in Personal Selections at an interest rate of 6% totals an additional \$12 per month. Enjoy these investments until you decide to sell, at which time, they'll set your home apart and add value.
- ⑥ Warranty**
  - Work done to your home by outside professionals may affect or void your warranty. Trade-related damage from an outside professional is not covered under your new home warranty.
- ⑦ Risk**
  - Eliminate the risk and allow us to take responsibility and manage the details. Making sure the materials are right, that the trades are professional and that the work is done on time, are things that we do every day.



Depending on your mortgage lender, many of our personal choice items can be rolled into your monthly payments so you can enhance your investment while creating a home that is YOU!

Clearly, the benefits are more than the added investment in your home.



# Kitchens

## Design Essentials

### Cabinetry & Hardware

These compose a large surface in your kitchen and the backdrop that states the style of the room. So many people start their design choices here. From recessed panels, to flat contemporary doors in natural grain wood, choices include painted and thermofoil. Remember to consider the style and finish of knobs and pulls as well.

### Countertops

They're what you look at the most while working in the kitchen and a part of the room's composition. Think colours and patterns but don't forget durability and sensitivities.

Granites offer durability, natural veining and a wide array of colours. Quartz is easy to maintain with no sealing, higher heat resistance and consistency of colour for a contemporary look with no seams.

Complement your style by specifying details like thickness and edging.

### Backsplash

Functionally, your backsplash is great at deflecting moisture and cleans easily. Aesthetically, it enhances the room. From mirrored to textured to mosaic, it adds elegance. The backsplash can also unify your cabinetry and countertop colour scheme. A slab or glass backsplash is a seamless clean solution, offering no grout lines to clean.

### Appliances

They're the essential helping hands in the kitchen. Choose the configuration (counter depth, built-in, integrated) that suits you and your layout best. Some people opt for a professional grade range/oven for heavy cooking requirements.

## Considerations

**Customize** the interior of your cabinetry with pot drawers, cutlery dividers and recycling cabinets to maximize space and suit your lifestyle.

**Lighting** is practical in the kitchen and can create the illusion of a larger space. Plan ahead for necessary task lighting, or under-cabinet lighting, to illuminate in specific areas.

**Filtered water** is a faucet away with pre-planning and makes drinking 8 glasses a day an easy task.



**Curtains at ceiling height**  
draw the eye upward  
and create grandeur

**Accent lighting**  
with beveled glass lantern  
creates a rustic yet  
elegant look

**Paired pictures**  
create symmetry and balance

**Area rug**  
helps to define living space

**Weathered wood**  
dining room table left  
exposed brings the  
outside “in”

# Living & Dining rooms

## Design Essentials

### Create a Focal Point

Whether it’s a piece of fine millwork, your fireplace or treated window with drapery, a focal point can attract the eye and bring all elements together. Practical and stylish, your furniture can act as an architectural feature, making awkward or small spaces a point of interest.

### Colour Palette

A consistent colour palette throughout the living room helps to maximize an open concept design. Visually it enlarges space and allows you to flow from room to room.

### Finishings

Think of these as a backdrop to your furniture and accent décor. Note how classic finishings offer the most flexibility. You can instantly change the flavour of a room with simple furniture pieces, cushions and accessories.

## Considerations

### Architectural Details

Cornice mouldings and baseboards are a great way to add interest to bare walls.

### Audio/Visual

Whether it’s a capped ceiling outlet, wall sconces or home theatre, it’s crucial to lay these out in your mind (and suite) BEFORE concrete is poured.

### Window Coverings

Don’t underestimate their effect on a room. They can diffuse light by day, then offer privacy and comfort at night. They can also frame the window, emphasizing the view.

### Doors

They create separation between open spaces and establish flexible privacy. Pocket doors, French doors and frosted doors are important Personal Selection considerations.



**Custom millwork**  
serves as a headboard and  
shelving for accessories

**Bright accent colour**  
adds a “punch” and enlivens  
the decorating space

**Rule of 3**  
accessories in groupings  
of 3 to create an aesthetically-  
pleasing accent

**Legs on furniture**  
help to give a light feel to  
a smaller room

**No footboard**  
is an instant space saver  
(and allows you to stretch out)

# Bedrooms

## Design Essentials

**Flooring**  
Various carpet colours can be brought in to your bedroom retreat. Additional under-padding can add spring, prolong life, reduce dust circulation and increase noise insulation. Extending laminate flooring into the bedroom is increasingly popular and creates consistency in material, making the room appear larger, allowing the eye to move easily from room to room. Talk to us about this available option.

**Mirrored Sliders**  
Double your view and add virtual space to your bedroom. The frameless option goes a step farther and boasts uninterrupted lines adding a feeling of lightness. (It also serves as a very functional full length mirror.)

## Considerations

**Closet Organizer**  
Maximize closet space with an organizer that can wring extra cubic feet seemingly from nowhere.

**Window Coverings**  
For privacy, light blockage or simply aesthetic appeal, window coverings are often one of the first to-do items PRIOR to moving in.

**Space-Saving Furniture Design**  
Beds with storage below, coordinated night tables and a media/storage unit can make your bedroom a well functioning space, morning and night.

**Lighting & Electrical**  
Think ahead. Bedrooms are for much more than sleep. Do you read in bed or use your laptop? Do you iron shirts here while watching TV? List any activities that require outlets and/or task lighting to make optimal use of your space. Consider everything from sconces to lamps to dimmer switches, curtain controls and TV placement.



Shadow box mirrors  
provide the opportunity for  
an easy shelf

Larger tiles  
have fewer grout lines for  
easy maintenance and  
enlarge space

Tile repeated on  
floor and wall  
visually expands the space

Double thickness countertop  
with sleek lines makes  
a strong contemporary  
design statement

Built-in vanity drawers  
allow for additional storage

# Bathrooms

## Design Essentials

### Tile Placement

Lay them straight, horizontally or vertically. You decide.

### Tiled Bathroom Wall

An extension of the wall tile is both an attractive design feature and a way to simplify maintenance requirements.

### Cabinetry & Hardware

Match or complement other cabinetry within your home for visual consistency.

### Plumbing Fixtures

Select from various finishes and styles to coordinate bath accessories.

## Considerations

### Open Shelving

An efficient way to add easy storage and beauty to your bathroom.

### Bathroom Jewellery

Towel bars, soap dishes and handles are an easy way to personalize your space and add functionality.

### Tub and Showers

Deciding early is key when converting a shower to a bathtub or upgrading your tub to a whirlpool Jacuzzi.

### Frameless Shower Stall

Virtually weightless and elegant this is an appealing alternative to the included framed shower stall.

### Lighting & Electrical

Consider your daily personal routine to evaluate your needs: plug-in personal grooming appliances, makeup application, etc. Maybe you require centered outlets and directional task lighting.



## Electrical Outlets

Position them however you please: vertically, horizontally, or make them 'disappear', recessed under a valance. Consider coloured duplex receptacles and faceplates – especially on an island. Let floor outlets complement furniture placement.



## Balconies and Terraces

Living has taken a trip outside. Consider upgrading these concrete amenities with a tiled floor for a beautiful extension of your home.

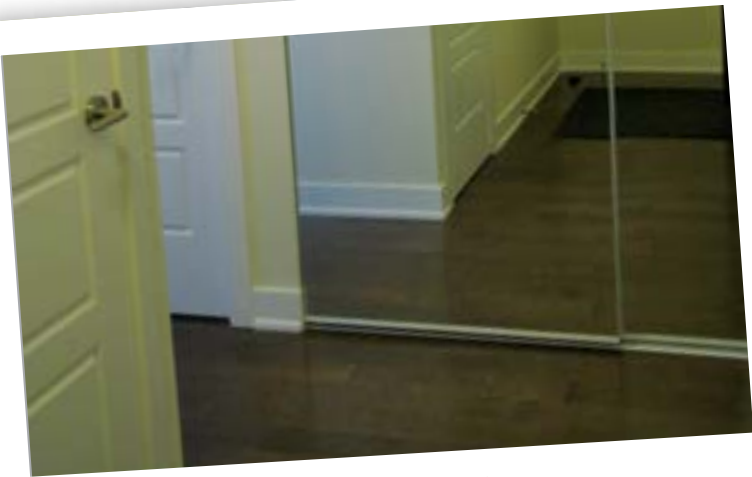
# finishing touches

The details you select are a reflection of your personality. From architectural features to functional enhancements and decorative displays, they enhance your living space, personalize your surroundings and add value. These, our longstanding favourites, are a great place to start.



## Architectural Details

Whether it be smooth or coffered ceilings, cornice moldings, or framed archways, details can add classic architectural interest.



## Frameless Mirror Sliders

The frameless option goes a step further and boasts uninterrupted lines adding a feeling of lightness. (It also serves as a very functional full length mirror.)

"Architectural elements inject visual interest and instant character."

STELLA SALVADOR, EDITOR



## Interior Doors

Frosted glass, French doors or pocket doors are all viable options to add beauty, enhance privacy or maximize floor space within your home.

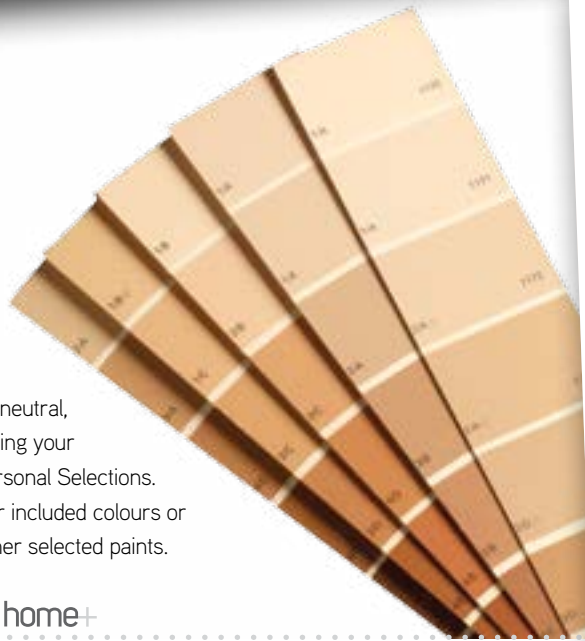


## Home Automation

Increase convenience, control and comfort with home theatre (plasma, surround sound) and motorized window coverings (to adjust heating, lighting and the view).

## Paint

Our colours are neutral, easily incorporating your features and Personal Selections. Choose from our included colours or ask about designer selected paints.



## Frameless Shower Stall

Virtually weightless and elegant this is an appealing alternative to the included framed shower stall.



## "All Off" Switch

With the flick of a switch, turn off all nonessential power within your home (ie light switches you forgot to turn off) from the convenience of your front door on the way out. What a time (and money) saver.



## Potlights

Where possible, consider them as an alternative to surface lighting. They take minimal visual ceiling space and are a clean option that can be applied to dropped ceilings.

# Colour + Light



**Chandelier**  
for overall illumination  
with reflective crystals

**Panel drapery**  
to take advantage of  
natural light

**Pot lights in cabinetry**  
to highlight displayed items

**Soft glow of candlelight**  
to add ambience

**Mirrored cabinetry**  
is used to reflect the light

## Subtle, Fundamental Design Elements.

Think of each room as a kaleidoscope, manipulating light, colour and reflection. Every colour we see is the result of the light that falls on an object. In turn, how we see colour depends on light. It's all interconnected.

Together they're beautiful and can magically transform a room, impacting space, texture and even your mood. Colour theorists say your body absorbs the vibration of colours, which, in turn, affects your brain and can actually alter your mood.

## Colour Considerations

### ① Orientation

The direction a room faces affects its quality of light. For example a room that faces east offers greater sunlight in the morning and its colour takes on a warmer tone early in the day.

### ② Size

Colour can affect the size of a living space. Light colours tend to recede and can push surfaces outward, making them appear larger.

### ③ Palette

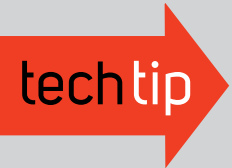
Keeping within the same tones makes a space appear larger and allows for continuity, particularly in an open concept design.

### ④ Accent

An accent colour is used in small quantities to add drama to a colour scheme. They are often a bright, vibrant colour that complements your scheme and can be used either in paint, accessories or art. (They're also easier to change should you tire of them.)

“Keep in mind that the colour on a paint chip will seem less intense or lighter than the colour applied to a whole wall. Wet the paint chip slightly to get a more accurate representation of its colour.”

Stella Salvador, Editor



Match colours from anything and create custom palettes

- Ben Color Capture
- Sherwin Williams ColorSnap

Visit  
[prattandlamert.com/color/personality-quiz/](http://prattandlamert.com/color/personality-quiz/)

# Colour + Light



## Ambient + Task

Lighting can truly enhance your space. Make sure to dedicate enough time and energy into choices concerning your lighting plan. There's a lot to consider when planning the lighting of your new home. Varying light sources with multiple controls (switched outlet and dimmers) offers flexibility for different settings, day or night.

The general lighting of your home, also called ambient lighting, is made up of sunlight, moonlight and artificial light. Its main purpose is to produce even illumination of a room and to keep us visually comfortable. Task lighting, on the other hand, is a concentrated light with a specific function. Whether it's for reading, writing, eating or cooking, it includes lamps, valance and pot lights, chandeliers and fixtures.

## Lighting Considerations

- ① Function**
  - What you do in a room defines its function. Many rooms are multi-purpose. Your bedroom isn't just for sleeping. It's where you start (awaken, get dressed) and end (unwind, read a book) your day. These functions usually require more than ambient lighting from above. Be sure to carefully consider how you use the space and at what time of day.
- ② Atmosphere**
  - The quality of light has an enormous effect on the mood of any space and lighting levels are instrumental in creating atmosphere. Wall lights and dimmers allow you to modulate the light to suit a mood and add functionality.
- ③ Proportion & Balance**
  - Make sure that the proportion of your lighting matches those of the rooms. No particular area in a multi-function room should dominate. Each area should have accent lighting of its own.
- ④ Natural Light (and Darkness)**
  - Make use of natural light from windows whenever possible but account for its limitations during the evening or on a grey day. Utilize floor and table lamps to provide pools of light at darker periods and make your living room liveable, day or night.
- ⑤ Direction**
  - Be sure that the light shines in the direction you want. Lamps, spotlights and sconces cast light up or down, highlighting desired areas of focus, like art or decorative detailing.

eco tip

CFL bulbs (Compact Fluorescent Lamps) are safe to use in the home, but contain small amounts of mercury and require careful handling when being disposed of. Check [toronto.ca/garbage](http://toronto.ca/garbage) or call 311 to find a solid waste drop-off depot near you. If bulbs break, ventilate the room for 15 minutes and remove wearing gloves.



SILVERWOOD  
F L O O R I N G

SILVERWOOD FLOORING'S  
HARDWOOD COLLECTION

*Engineered for Condos | Solid to the Core*

416.923.8181 | [www.silverwoodflooring.com](http://www.silverwoodflooring.com)

Junkers Wild Hazel | Reflection | 14mm (9/16") 2-strip

# Artists

## on Selecting Artwork for Your Home

### GINETTA BARBARO

I cannot imagine my life without art. My pleasure for art began in my youth, influenced by an exemplary art teacher. Thus began the long journey. Learning about art truly never ends.

I have served on the Board of Directors of the Carrier Art Gallery at the Columbus Centre. Additionally, I've been a Docent at the Koffler Gallery and the Art Gallery of Ontario (AGO), where I had the privilege of serving on the Curatorial Board for 9 years.

#### My Inspiration:

My inspiration was being able to share my knowledge of art works with students, a special joy and passion for me. Art can take many forms: social commentary in contemporary art, recording beauty in landscape and still life, religious themes.

#### My Advice:

Taste, preference is completely subjective.

Ultimately, we label an object of art of our choosing beautiful because it speaks to us, it evokes a pleasurable response in us, it stimulates our emotions, our intellect and our imagination. The joy is in the finding. And so the search begins: art galleries, museums, anywhere that houses art, the rental of art. If you travel you have great opportunities to seek out famous art galleries.

### LORNE CHAPMAN

I am a commercial photographer have owned a studio in Markham for over 30 years. In my spare time I pursue landscape and nature photography.

I am an active member of the Markham Arts Council and proud recipient of the People's Choice Artist in 2008.

#### My Inspiration:

The intricate designs found in creation are truly staggering and when you capture these with just the right light, and texture, I'm very satisfied.

#### My Advice:

Choose art that speaks to you or moves you. It is important to choose art that you have an emotional attachment to. Selecting a piece that matches your sofa, is less likely to offer you freedom to choose what really inspires you.

#### My Faves:

I have a few favourite places to become inspired by other artists. City galleries are always great, but I also enjoy driving the back roads of Ontario, visiting small galleries in towns and villages. That way I get inspired by both nature and by other artists.

### Tools



#### Artnear

A global guide to contemporary art – the best galleries and exhibitions worldwide.

Browse by artist, event or nearby venue – all linked to GPS maps, whether you're in New York, Milan or Toronto.

### Explore

[ago.net/artrental-paintings](http://ago.net/artrental-paintings)  
the AGO's Art Rental + Sales Gallery has consigned artwork from Toronto's top galleries and independent artists.

### Surf

[condo.ca](http://condo.ca)

Click on Décor Trends for an online gallery of inspiration.

# ROSS MARKS

I have has been working as a Visual Artist for the past 30 years and a Corporate Art Consultant with PI Creative Art for 15 years.

## My Inspiration:

I am most often inspired by both the natural and urban environments. I have a definite affection for subjects that are illuminated from behind; a sense of wonder and sensuality is created by this type of dramatic lighting effect. I prefer imagery that is sculptural and textural with a strong sense of line to its composition. I find most of my inspiration when travelling to new locals as my vision is fresh and unaffected.

## My Advice:

Always select artwork which inspires you both emotionally and intellectually. Art is very personal. Buy artwork that you enjoy and not necessarily what is the current trend.

For interiors it is always important to consider the mood of the environment in which the artwork is placed. Restful spaces are typically better suited to calming imagery and for areas of activity, stimulating works are favoured. Designing a room around a wonderful work of art is not only easier but often more rewarding.

## My Faves:

I enjoyed visiting art fairs such as Art Toronto, where major art galleries from across Canada and the world come together to showcase some of the newest and finest artists' works. As with galleries and museums there truly is nothing better than experiencing artwork firsthand. An added bonus at art fairs and exhibition openings is that you can develop new relationships with galleries and artists on a more personal level.



# TARA MARSHALL

An art historian by training, I love to share my interest and knowledge of contemporary Canadian art with others through teaching, writing, curating and art consulting.

## My Inspiration:

In art, I'm inspired by ideas themselves. I think the most powerful art makes you think – about the world, about yourself, about things you may have never thought about before.

## My Advice:

Spend lots of time at art galleries, all sorts of art galleries. If you don't have the time, hire a consultant to help. Stay away from the two polarities of buying for investment or buying just for decoration. Instead, look for art that will retain your interest.

## My Faves:

My favourite place to immerse myself in art is 401 Richmond St, where a range of galleries from commercial to artist-run centres live together in a big historical, refurbished building. I love the AGO to revisit old favourites or see new exhibitions and have previously enjoyed the exhibitions at the Museum of Contemporary Canadian Art and the Power Plant. For commercial galleries, I like Clark Faria in the distillery and Barbara Edwards Gallery (a new North-Annex gem) for their mixture of strong Canadian and International contemporary art.

# CANAMOULD EXTRUSIONS INC.

## TRIMROC™ Interior Plaster Mouldings

Smooth acrylic plaster finish gives this lightweight trim the classic, durable and refined look to any project.



## STONE CASTINGS NATURAL LIMESTONE FIREPLACES

Marvel at the beauty of true craftsmanship in these exquisitely detailed natural limestone fireplace mantels. From free-standing electric plug in units to re-facing your existing fireplace mantel, instantly transform any room into your dream room.



# Big Design Plans? You May Need An Expert.



Many people wonder if they should hire an interior designer to help them with their design and décor selections. In most cases, it's not necessary. By following the tips provided in Tridel Home+, attending Tridel's seminars and actively working with your Customer Care Representative, you'll have all the help you need.

However, sometimes you'd like the reassurance of your own interior designer who can provide you with detailed recommendations on custom millwork, a lighting/ceiling plan or even a complete furniture layout.

Remember, Tridel Customer Care Representatives are knowledgeable on all Tridel products and services. When the job is of a larger scale, however, you might want to call in an expert. At Tridel we've designed a specific process for working with you and your interior designer.

If you need any suggestions on finding one, we're happy to refer you to designers that have worked for our homeowners in the past and understand the complexity of high-rise condominium design. Big designs call for some extra professional help. You and your home deserve it!



  
**NORMAC KITCHENS**  
[www.normackitchens.com](http://www.normackitchens.com)

1

**DECORIUM**

363 Supertest Rd., Toronto, ON

**416.736.6120****Decorium.com**

Beautiful 100,000 square foot showroom of beautiful home furnishings, including a wide variety of furniture that is specifically tailored for condominium-sized spaces. Free designer services available.

2

**ELTE**

80 Ronald Ave., Toronto, ON

**416.785.7885****Elte.com**

Designer name furniture, bedding and area rugs set up in inspiring vignettes to help create your spaces.

3

**ROYAL LIGHTING**

1549 Avenue Rd., Toronto, ON

**416.782.1129****Royallighting.com**

A wonderful variety of stylish ceiling and wall lights and other task lighting.

4

**UNION LIGHTING AND FURNISHINGS**

1491 Castlefield Ave., Toronto, ON

**416.652.2200****Unionlightingandfurnishings.com**

A large variety of lighting, furniture and accessories contains something for everyone.

# Where to shop

IF YOU LOVE THE FURNISHINGS AND DECORATIONS IN OUR MAGAZINE AS MUCH AS WE DID AND WANT TO KNOW WHERE WE FIND THESE ITEMS, YOU MAY WANT TO CONSIDER SOME OF THE FOLLOWING STORES:

5

**DESIGNER FABRIC OUTLET**

1360 Queen St. W., Toronto, ON

**416.531.281****Designerfabrics.ca**

An inexpensive and endless assortment of the most up-to-date fabrics.

6

**ART INTERIORS**

446 Spadina Rd., Toronto, ON

**416.488.3157****Artinteriors.ca**

Paintings, photographs, drawings and multimedia from the traditional to the contemporary are available for every style and budget. A great source for original local art at reasonable prices.

7

**PI CREATIVE ART**

1180 Caledonia Rd., Toronto, ON

**416.789.7156****Picreativeart.com**

Representing more than 100 artists PI Creative Art's collection consists of original paintings, limited edition giclée, open edition prints and recent line of custom alternative substrates. The vast collections of imagery in traditional, transitional and contemporary styles. Original art by local artists can be found at reasonable prices.

8

**SUNBRITE DRAPERY**

7695 Jane St., Concord, ON

**905.660.2480****Sunbriterapery.com**

A beautiful showroom of window coverings with everything from classic venetians to Hunter Douglas designs. Personal service and consulting is available.

9

## ANGUS &amp; COMPANY

647 Dupont St., Toronto, ON

**416.537.4104****Angusandcompany.ca**

A collection of unique and one of a kind accessories and furnishings are available at this design store, which mixes the feel of a general store with the ambiance of a cocktail party. A great mix of antique, vintage, and contemporary furnishing and finishes fill the store.

10

## DOMINIUM RUG

3420 Yonge St., Toronto, ON

**416.485.9488****Dominionrug.com**

With over 15,000 different styles of carpets and rugs Dominion Rug is sure to offer a product that will please any client. Rug selections include; Martha Stewart Rugs, Frank Lloyd Wright Rugs, Needlepoint Rugs and Tibetan Rugs.

11

## GINGERS

95 Ronald Ave., Toronto, ON

**416.787.1787**

Often the first-stop shop for top-of-the-line bathroom and kitchen retail therapy, Ginger's (part of the Elte empire and just around the corner) features chic and spa-like features for your home bathroom.

12

## CASALIFE

171 East Liberty St., Toronto, ON

**416.922.2785****Casalife.com**

Contemporary, multi-functional and condominium-sized furnishings for your new home.

Where to shop



13

## DIRECT INTERIORS

2005 Clark Blvd., Brampton, ON L6T 5P8

**905-791-9660****info@directinteriors.com**

Direct Interiors offers a truly unique shopping experience. Their 50,000 square foot showroom features a complete line of fine contemporary and traditional furniture from over 200 leading furniture suppliers for all lifestyles.

14

## POSITIVE SPACE INTERIORS

77 King St. E., Toronto, ON M5C 1G3

**416-363-0077****www.positivespaceinteriors.com**

Specializing in the integration of contemporary design and usable storage, a great selection of space-saving furniture. Custom work is also available.

15

## WEAVER'S ART

348 Davenport Rd., Toronto, ON M5R 1K6

**412-929-7929****www.weaversart.com**

One of the largest inventories of fine rugs in Canada, ranging from contemporary and modern Tibetan rugs to Old World vegetable-dye rugs. Each rug is truly a piece of art, handwoven with the finest silk and wool, or all wool.

16

## UP COUNTRY

310 King St., E. Toronto, ON M5A 1K6

**416-366-7477****www.upcountry.com**

Furnishings as well as decorative accessories in sleek and modern designs for all living spaces.

17

## WEST ELM

109 Atlantic Av., Toronto, ON M6K 1E2

**416-537-0110****www.westelm.com**

West Elm designs clean, simple products that incorporate global materials with natural and urban influences to suit the demands of modern living. Many of their products are designed specifically for small spaces and are 100% green.

18

## ART SHOPPE

2131 Yonge St., Toronto, ON M4S 2A7

**416-487-3211****www.theartsoppe.com**

From traditional classics to modern design, casual to formal, the finest furniture and home furnishings available from around the globe.

19

## QUASI MODO

789 Queen St. W., Toronto, ON M6J 1G1

**416-703-8300****www.quasimodomodern.com**

Quasi Modo Modern Furniture specializes in retailing modernist furniture, lighting and accessories for the home and office by some of the world's most renowned designers and manufacturers.

20

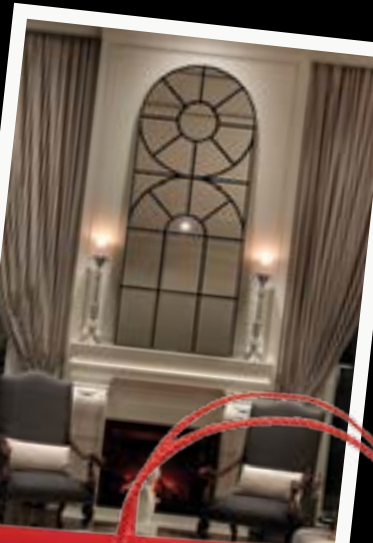
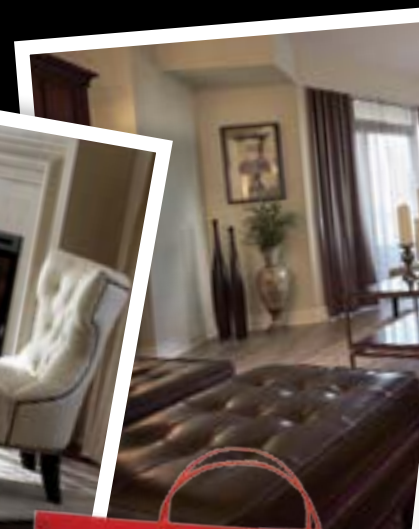
## BB BARGOONS / INVU DRAPERY

2784 Yonge St., Toronto, ON M4N 2J2

**416-481-5273****www.invudraperyco.com**

An extensive collection of fabrics, drapery hardware, custom furniture and decorative accessories for your home. Upholstery service, custom drapery sewing and installation available.

Where to shop



21

## EUROLITE

200 Queens Quay E., Suite 6  
Toronto, ON M5A 4K9**416-203-1501****www.eurolite.com**

A wide range of lighting options (including eco-friendly) for any space. Solutions both locally sourced and imported from all over the globe. They also can help design a luminaire that they will manufacture to your mind's design.

22

## CHAIRSOURCE

8305 Jane St., Concord, ON L4K 5Y3

**905-761-8790****www.chairsource.ca**

Chairsource is a unique one-stop showroom representing the best the chair market has to offer. Find chairs and tables, and design them to suit your needs.

23

## KINGSWOOD DRAPERY

54 Ashwarren Rd., Toronto, ON M3J 1Z5

**416-633-1103**

Kingswood Drapery specializes in custom drapery for all your window treatment needs.

24

## CREDIBLE UPHOLSTERY

380 Millway Ave., Concord, ON L4K 3V8

**905-760-0273****www.credibleupholstery.com**

Credible Upholstery is the place to go for all your upholstery needs. They also custom design or recreate any piece furniture you require for your home.

# THINKING OF LIGHTING FOR YOUR NEW CONDO... THINK LITEMODE!

ALL THE LATEST FASHIONS & STYLES  
**SAVINGS OF 20-40%**  
THROUGHOUT OUR SHOWROOM

We stock a wide range of high quality light fixtures, at the lowest possible price. The success of this shows in the number of our repeat customers, who continue to shop at Litemode for all their lighting needs. Come visit out newly renovated 8500 Sq. Ft. showroom. Litemode... we are "Your Lighting Store"!

**SHOWROOM HOURS**  
MONDAY – WEDNESDAY 9 AM – 6 PM  
THURSDAY 9 AM – 8 PM  
FRIDAY – SATURDAY 9 A.M- 6 PM  
SUNDAY – CLOSED



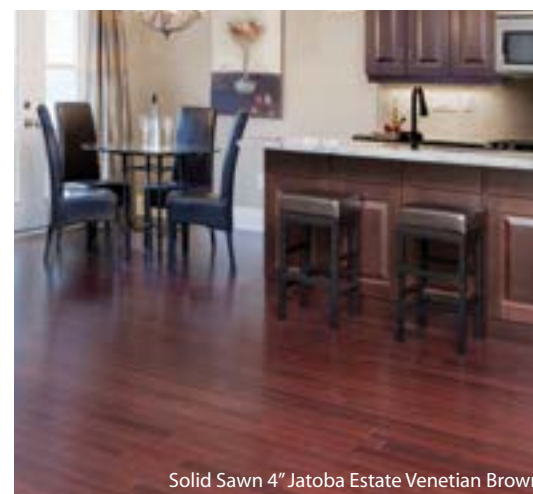
**8355 JANE STREET (JUST SOUTH OF LANGSTAFF)**  
**CONCORD, ONTARIO L4K 5Y3**  
**905-738-8889 • WWW.LITEMODE.CA**



Solid Sawn 7" White Oak Character Black Oak



Solid Sawn 3 1/4" Red Oak Estate Pewter



Solid Sawn 4" Jatoba Estate Venetian Brown



Solid Sawn 4" Maple Estate Godiva



For more information visit  
[www.vintageflooring.com](http://www.vintageflooring.com)

**more** than a floor

**Looks** like solid flooring

**Feels** like solid flooring

Experience the beauty of solid  
hardwood with the unparalleled  
stability of **Vintage's Solid Sawn**  
structured hardwood Flooring

Solid Sawn 4" Black Walnut Character Natural



# Stella's Solutions

Need help with solutions for your own design concerns?  
Visit [condo.ca](http://condo.ca) or email [ask@tridel.com](mailto:ask@tridel.com)

## How do I best deal with floor-to-ceiling large windows?

Floor-to-ceiling windows provide phenomenal views, but they can also bring heat and glare, which you may want to filter at times. Consider roller shades, which cover large windows cleanly and evenly – no fabric necessary! They also maintain the shape of the windows by covering them in sections. These are easily manipulated, and don't limit you.



## How do I make a contemporary focal point with my fireplace?

For modern décor, I suggest looking at new materials in new ways. Consider the room's overall design when making your selections. Often, clean lines, mosaic tiles and the lack of a mantle complement a modern look really well. By continuing the stone up the wall, you create a beautiful accent wall with intense drama. My favourite tip? Raise the fireplace to sitting height, so you can fully enjoy the view.

## What's the best way to visually expand a small space?

Fact: urban living sometimes means diminutive spaces. Start with the basics. By mirroring a wall, you essentially double and broaden your room. You also double the natural sunlight that enters your suite. Worried about sacrificing wall space? Be creative and consider hanging art from the ceiling for a novel display and striking décor accent. (Be sure to do it safely.)

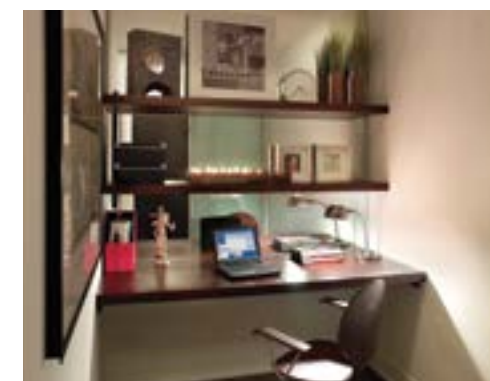


## Can you suggest window coverings for a curved window?

For most of us, curved windows are a delight, until we try to cover them. REST ASSURED, curved curtain rods are available. They symmetrically follow the shape of the windows. Floor length panels flank the windows beautifully. By placing rods at the ceiling, you create a sense of greater height.

## I'd like to create a den but I'm not sure I have the square footage?

Remember that size is relative and depends on many factors, including layout, furniture and amount of square-footage per person. Fortunately, there are many techniques to maximize smaller spaces. Flexibility and versatility are KEY! Don't overlook odd niche spaces because they can bring out the most efficient solutions. Again, add mirrors to visually expand. Wall-to-wall writing surfaces and floating shelves are ideal. Lastly, think mobility: filing drawers on wheels give the space flexibility for storage.



## How can I best design a multi-function room?

First, try to keep materials and colours consistent. It promotes a sense of unity. Consider your day-to-day living and assign a space for each task. Illumination is critical in these environments. By lighting appropriately, with task or ambient lighting, you make the most of living in a multi-function space. Wall units are also practical and reach ceiling height. The goal? High performance with functionality and comfort.

## Where should I stop the bathroom tile? Should I extend?

Continuing tile along the bathroom walls avoids visual breaks, allowing continuity (hence, enlarging what's often a smaller space). The benefits go beyond aesthetics however. It's just so easy to clean and maintain, not to mention impervious (moisture absorption rate is less than .5%) and extremely durable.





## 6<sup>TH</sup> SENSE<sup>®</sup> TECHNOLOGY

AN INTELLIGENT FABRIC CARE SYSTEM THAT ADAPTS TO EACH LOAD,  
KEEPING YOUR CLOTHES LOOKING NEWER, LONGER\*



Models shown: Duet<sup>®</sup> Steam washer WFW97HEXL and Duet<sup>®</sup> Steam dryer YWED97HEXL with optional 1 5.5" (39.4 cm) pedestals XHPC155XL and Worksurface XW29000XL



# Mi<sup>2</sup>

MARKET INTELLIGENCE

condo.ca  
LIFESTYLE.DESIGN.INFORMATION.



For the ultimate in condominium market intelligence, visit **condo.ca**. Featuring the latest industry stats and trends, it provides everything you need to stay knowledgeable and informed. Find up-to-date news and video stories reporting on the condo market and green building, as well as lifestyle features, décor tips, legal advice and more. Click, read, join the conversation – the latest news in modern condominium living is right here at **condo.ca**.



### recent posts

Experts recommend honed marble, not polished, for countertops.

FRIDAY, MARCH 18, 2011 AT 2:41 PM

[Share Article](#) | [Post a comment](#)

Toronto condos outperform other housing in early March.

FRIDAY, MARCH 18, 2011 AT 11:21 AM

[Share Article](#) | [Post a comment](#)

TD predicting ‘solid year’ for Canada’s economy.

WEDNESDAY, MARCH 16, 2011 AT 11:09 AM

[Share Article](#) | [Post a comment](#)

Ontario economy entering expansion phase: RBC.

FRIDAY, MARCH 11, 2011 AT 11:24 AM

[Share Article](#) | [Post a comment](#)

Create a bathroom that’s healthy and green.

THURSDAY, MARCH 10, 2011 AT 7:37 PM

[Share Article](#) | [Post a comment](#)

Condos remain most affordable housing in Ontario: RBC Report.

THURSDAY, FEBRUARY 24, 2011 AT 3:37 PM

[Share Article](#) | [Post a comment](#)

Transform your new condo into home sweet home.

MONDAY, FEBRUARY 21, 2011 AT 3:32 PM

[Share Article](#) | [Post a comment](#)

It’s “interim closing” day on your new condo: now what?

WEDNESDAY, FEBRUARY 16, 2011 AT 2:43 PM

[Share Article](#) | [Post a comment](#)

Simple ways to save energy, cut costs.

MONDAY, FEBRUARY 14, 2011 AT 12:37 PM

[Share Article](#) | [Post a comment](#)

Earth Hour lets governments know people are serious about climate change.

THURSDAY, FEBRUARY 3, 2011 AT 10:48 PM

[Share Article](#) | [Post a comment](#)

condo.ca